

# The Manitoba Community Power Program

---

## Developing Renewable Energy for Manitobans

Vibrant Communities Symposium

Thunderbird House

April 25, 2012

Dan Mazier  
Elton Energy Coop

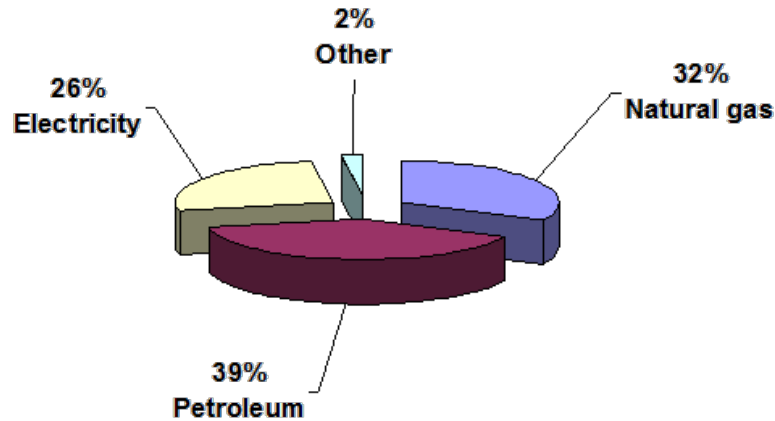


# What is a Community Power Program (CPP)?

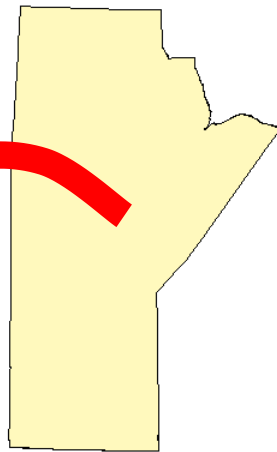
It is a **community economic development tool** that **enables** Manitobans to **invest in community owned renewable energy projects anywhere in Manitoba**



# Why a Community Power Program?



**\$3 billion/year  
leaves Manitoba to  
pay for non-  
renewable energy**



- 2/3 of the energy used in Manitoba is non-renewable
- As energy prices increase, we lose significant wealth
  - How do we maintain our high standard of living in the long term?
  - Answer: Leverage the emerging renewable energy sector to keep Manitoba dollars in Manitoba

# What Does \$3 Billion Mean to Rural Manitobans?

- \$2,500/year for every man, woman and child
- Rural Municipality (RM) of Elton, population 1285 = \$3.2 million/yr
- RM of Blanshard, population 686 = \$1.7 million/yr
- Brandon, population 46,584 = \$116 million/yr

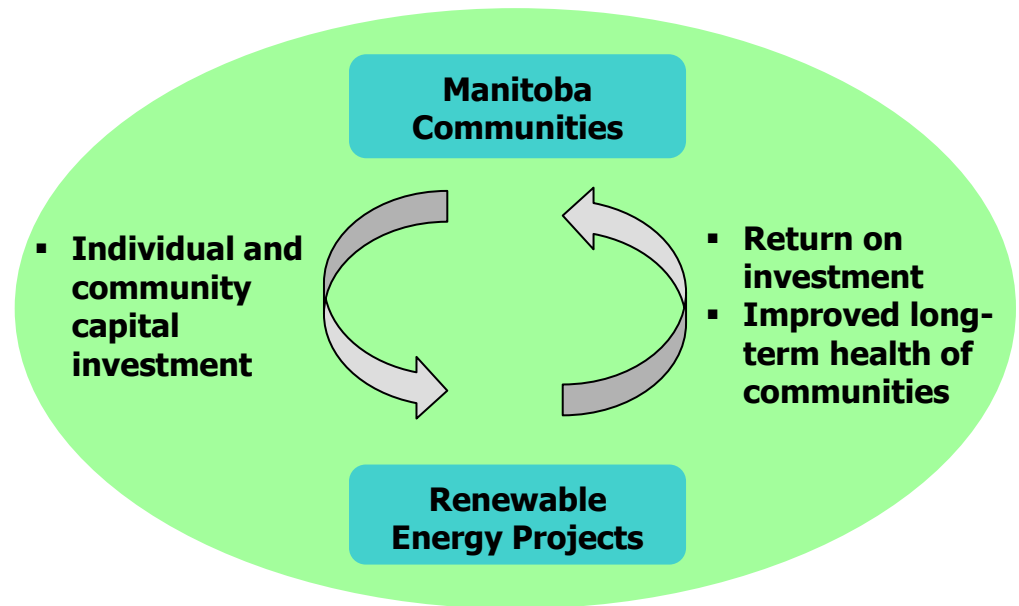
*Imagine the benefits if we could keep those dollars local!*



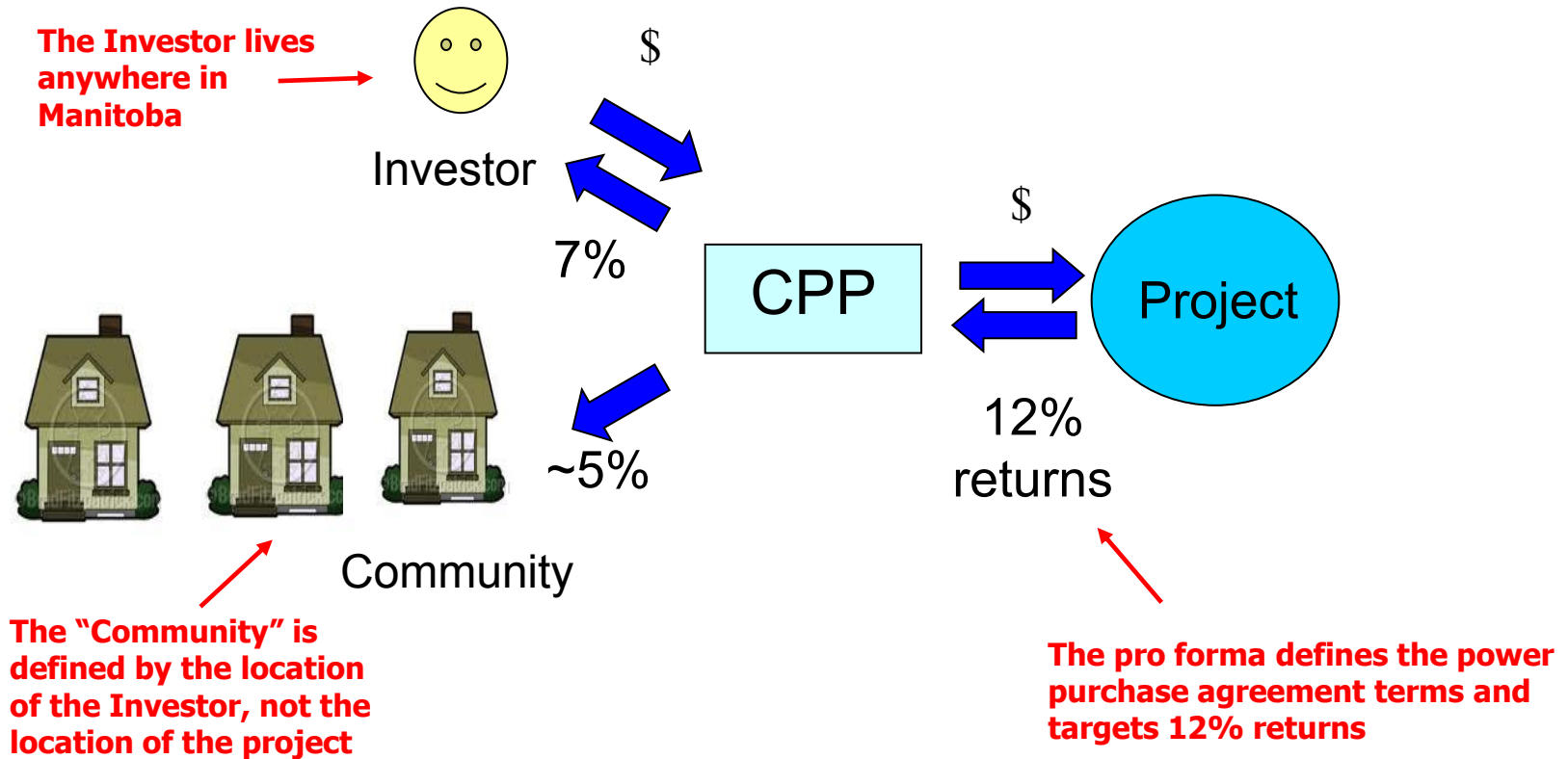
# Benefits of a Community Power Program

1. Directly increases investment in Manitoba's rural communities, and therefore proportionally **reduces "economic leakage" (3 billion)**

2. Strategically **transitions communities** from non-renewable energy use to a shared future based on long-term **sustainability and local participation in energy use decisions**



# Targeted Financial Returns



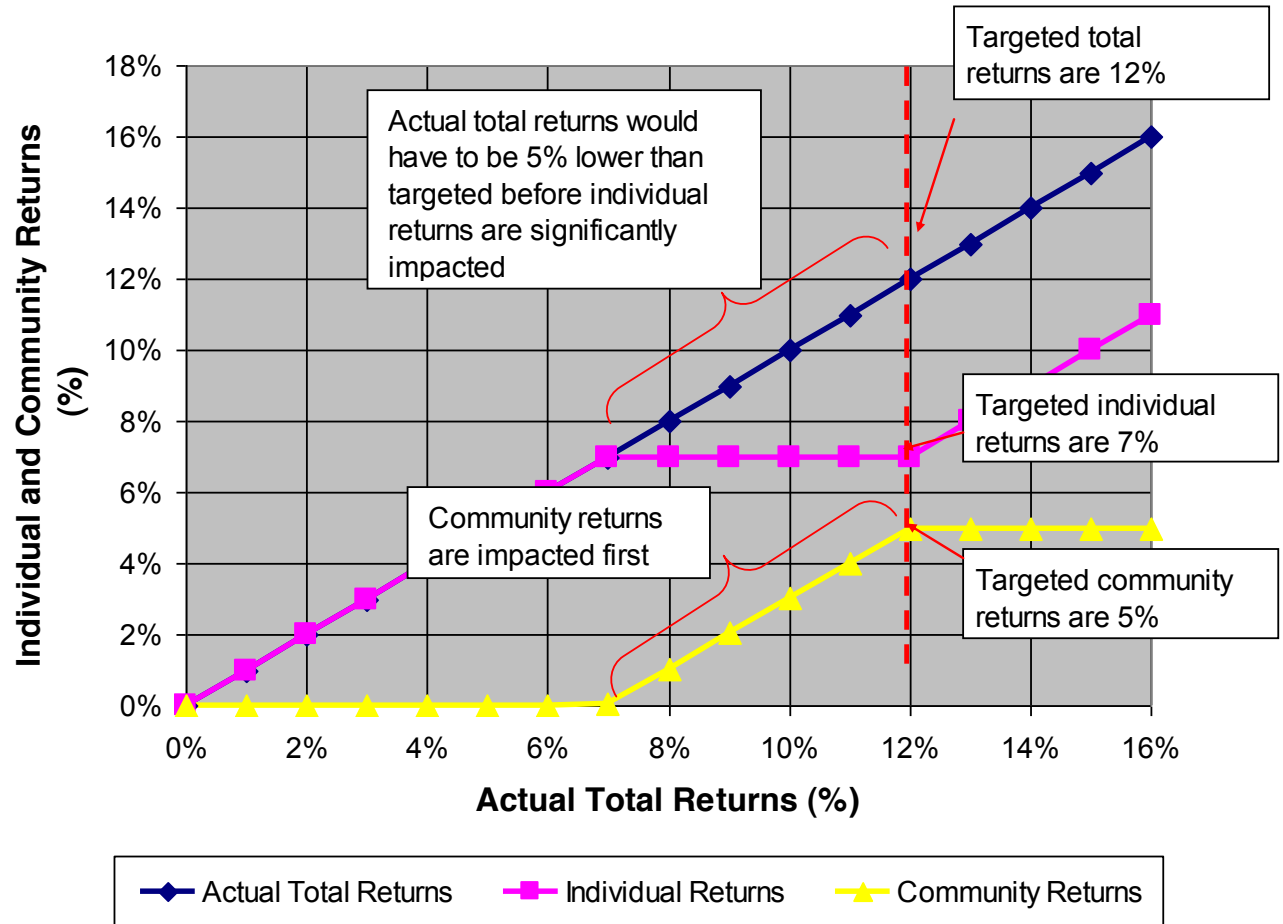
Creates stable, vibrant communities



# Example of Community Returns

- 200 people from the RM invest \$2,500 each (\$500,000 total)
- Targeted returns to the 200 individuals would be \$35,000 (7%) = \$175 each
- Targeted returns to the community would be \$25,000/year (5%)

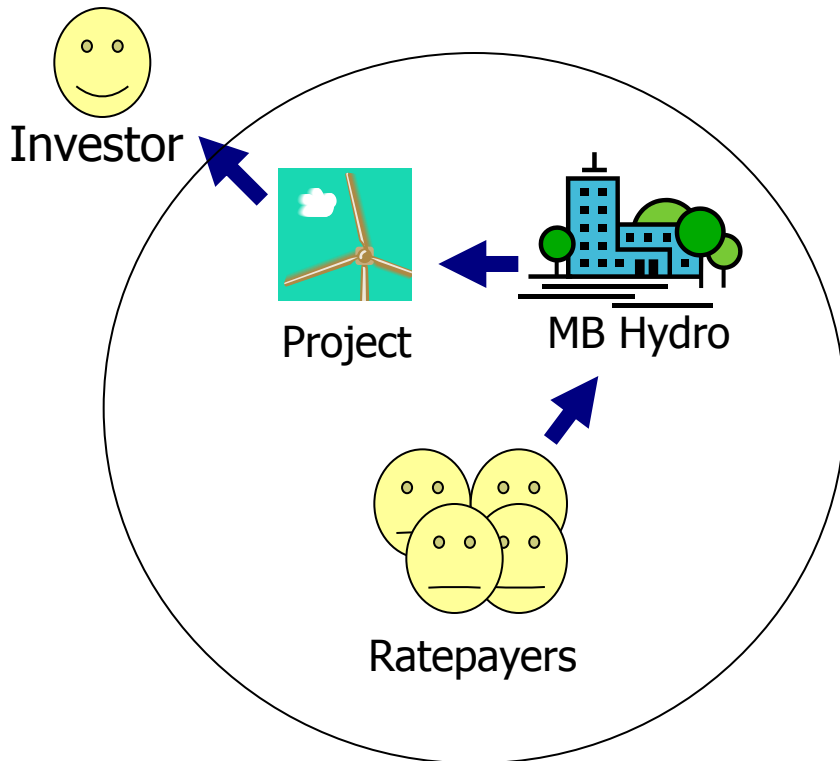
## How Actual Total Returns Impact Individual Returns and Community Returns



# Advantages of Community Power Over the Out-of-Area Investor Model (1 of 2)

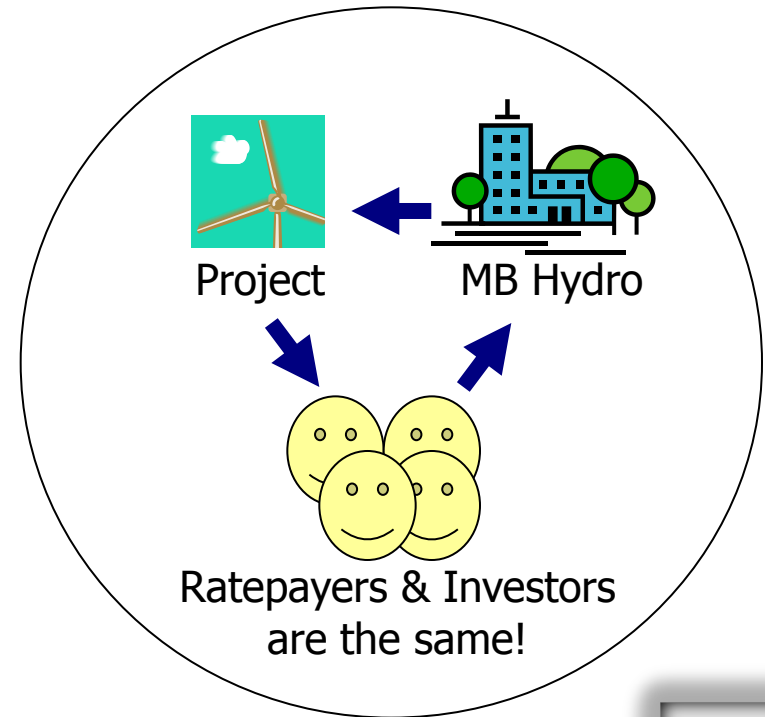
## Conventional Model

- Investors are from outside rural Manitoba
- Profits leave rural Manitoba



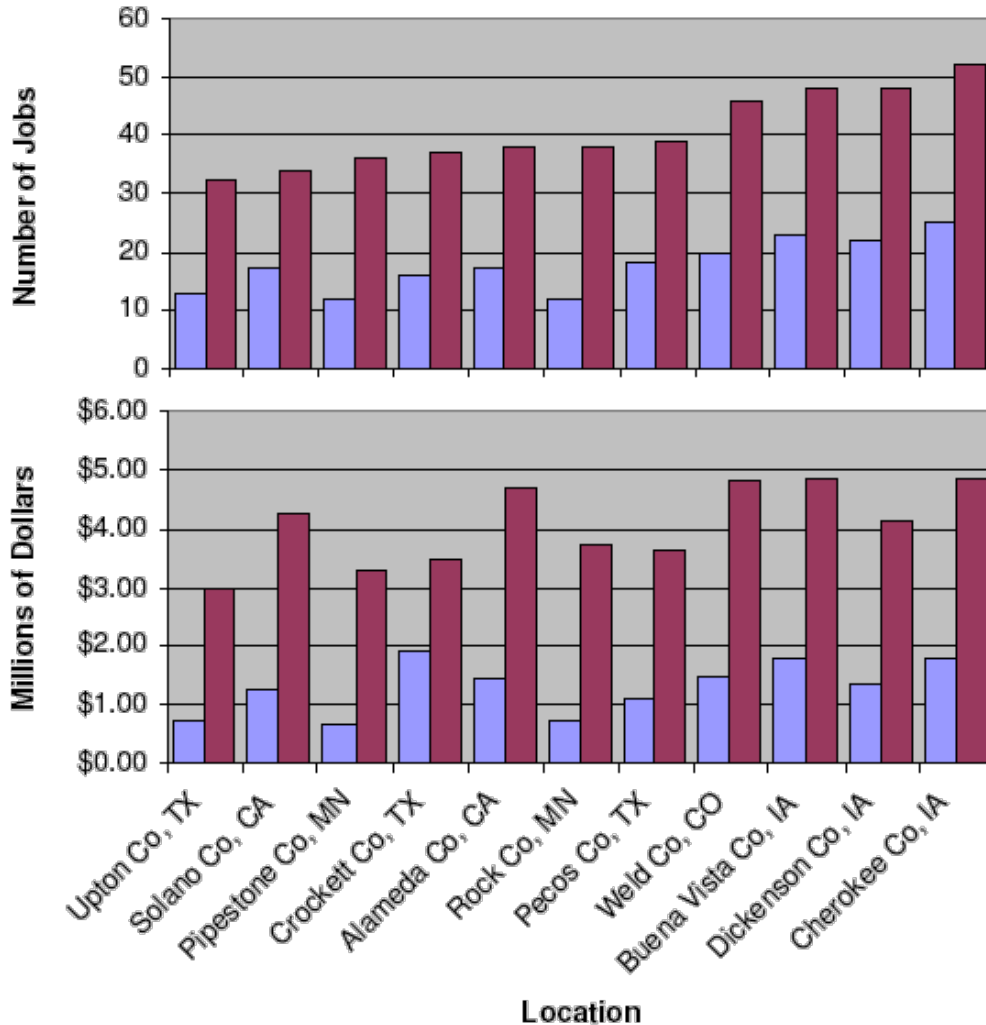
## Community Model

- Investors are from inside rural Manitoba
- Profits stay in rural Manitoba





# Advantages of Community Power Over the Out-of-Area Investor Model (2 of 2)



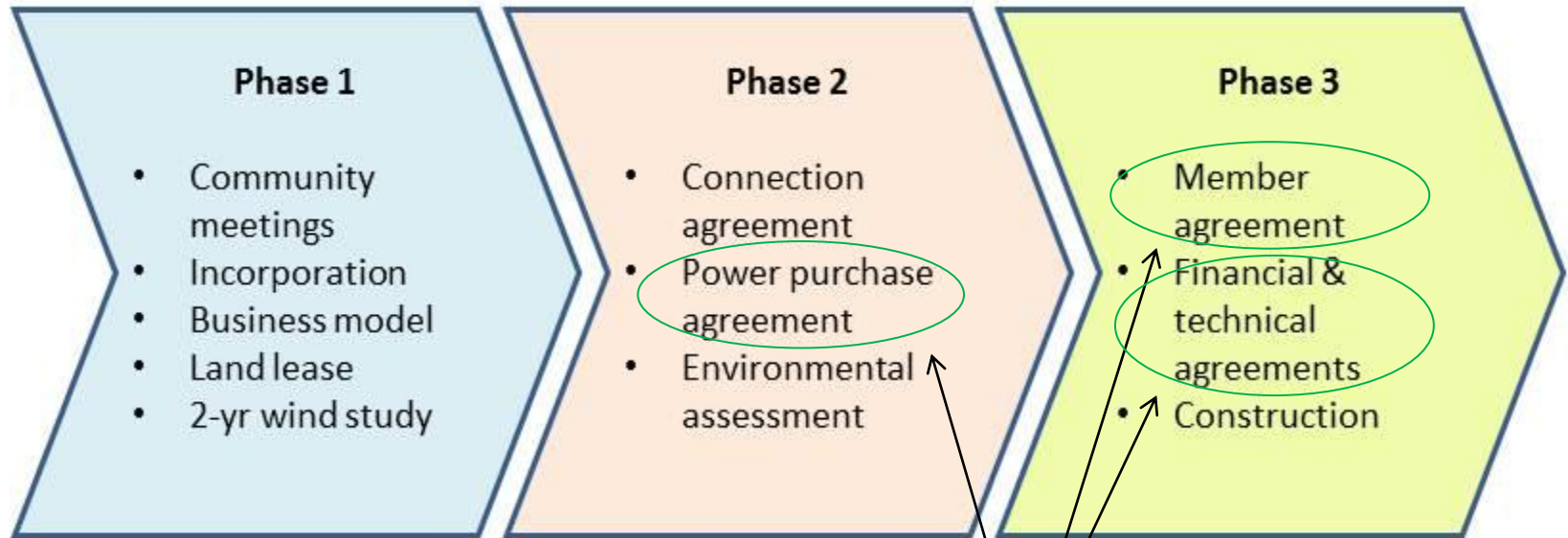
■ 40 MW Wind Power Project Owned by Out-of-Area Energy Company  
■ 20 Locally Owned Wind Power Projects, Each with a 2 MW Capacity

Locally-owned community wind is  
**3X**  
 more beneficial for local communities than wind developed by out-of-area companies

Source: US General Accounting Office: "Wind Power's Contribution to Electric Power Generation and Impact on Farms and Rural Communities", 2004



# Next Steps for the Elton Energy Project



Where we are today

**We know there are significant barriers to successfully completing these key activities**



# Cooperative Community Strategy Grant (1 of 2)

- Elton Energy Cooperative has been awarded a 2-year grant to **focus on barriers** to community power projects in Manitoba
  - We will **prove** the viability of renewable energy cooperatives as a low risk investment mechanism, accessible to ordinary Manitobans, that maximizes the retention of economic development dollars in the province
  - Based on what we learn, follow-on projects will be able to avoid the requirement for each emerging project to “reinvent the wheel”
  - A Barriers/Solutions paper will be created



# Cooperative Community Strategy Grant (2 of 2)

- We will conduct interviews with other experienced organizations to identify the legislative changes required:
  - Ontario: OSEA, TREC (WindShare)
  - Nova Scotia: Community Economic Development Investment Fund (CEDIF)
  - Minnesota: Community-Based Energy Development (C-BED)
  - Canadian Economic Development (CEDNet)
  - International Institute for Sustainable Development (IISD)
- We will work with key stakeholders in the province to make the changes and develop a successful program:
  - Innovation, Energy and Mines, Housing and Community Development, MAFRI, Manitoba Hydro



# Renewable Energy for Long Term Prosperity

By focusing on:

- return on investment
- transparency
- public-private partnership approach

Manitoba's communities will benefit in the long-term



# A Sustainable Development Model



- **Economic Leg** (Financial Capital, Economic Security and Infrastructure)
  - Good Jobs - Fair wages - Responsible Business - Local jobs
- **Environmental Leg** (Natural Capital, Ecological Integrity)
  - Eco-Efficiencies - Eco Effectiveness - Zero Waste - Restorative - Air - Land - Water
- **Social Leg** (Human & Social Capital)
  - Employees - Community - World - Safety - Health Care - Education - Culture

# Capturing Community Energy

How the **renewable energy sector is developed** has **long-term** impacts for **economic development** in the province

Let's create an energy and economic future that's **sustainable and beneficial to Manitoba**



# Thank You



"Communities already exist. Instead, think about how you can help that community do what it wants to do."

Mark Zuckerberg, founder and CEO of Facebook

